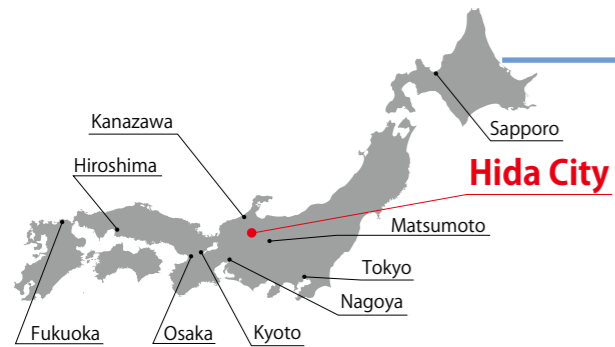
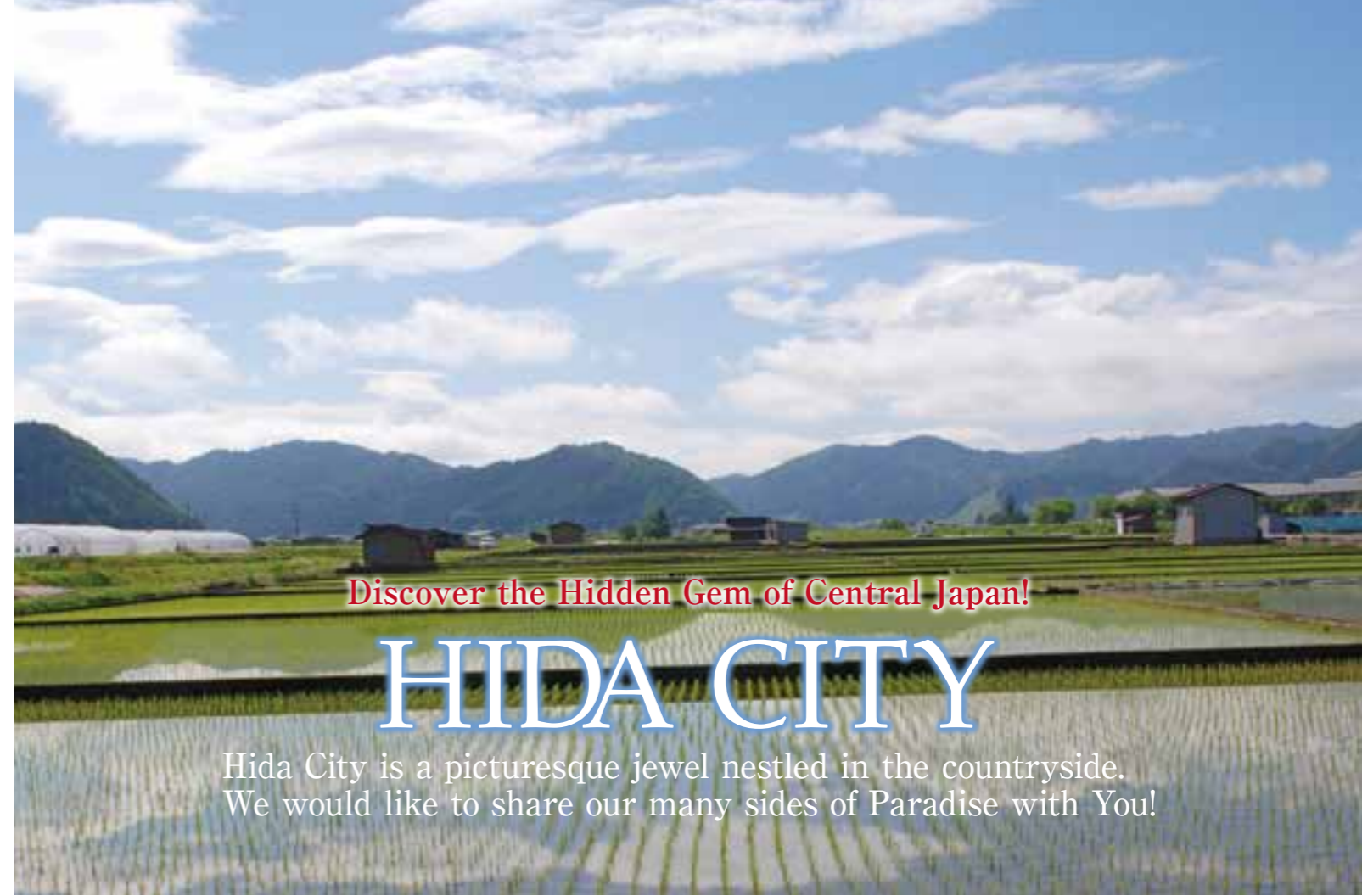
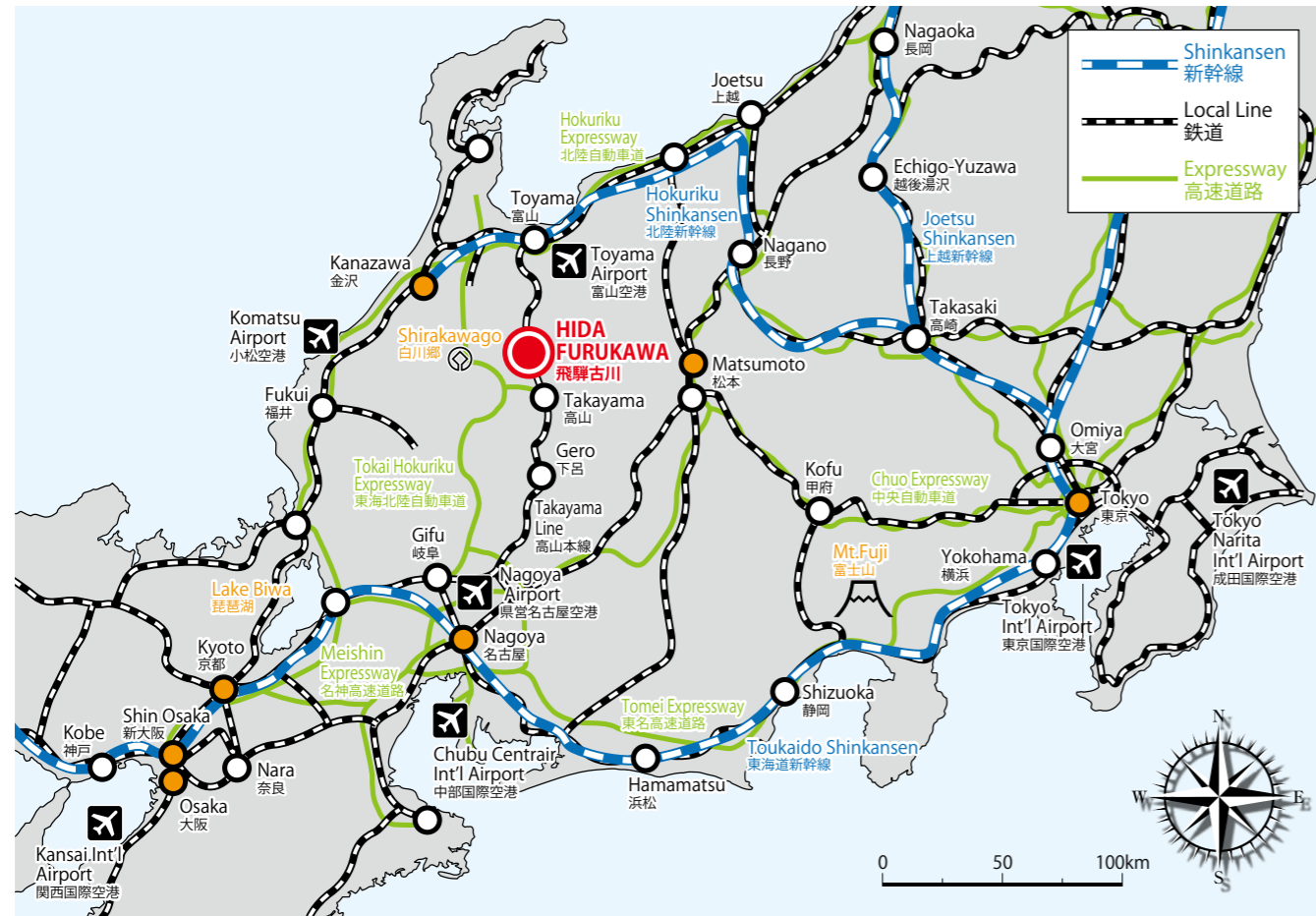


Location & Access



Hida City is located in the northern part of Gifu Prefecture in central Japan. **Hida Furukawa** is the central neighborhood of Hida City and the name of our local train station.



Discover the Hidden Gem of Central Japan!

HIDA CITY

Hida City is a picturesque jewel nestled in the countryside. We would like to share our many sides of Paradise with You!



Tokyo	Hokuriku Shinkansen 128min	Toyama	JR Takayama Line 75min	Hida Furukawa	225min (3h45m)
		22min*			
Tokyo	Tokaido Shinkansen 100min	Nagoya	JR Takayama Line 162min	Hida Furukawa	270min (4h30m)
		8min*			
Shin Osaka	Tokaido Shinkansen 51min	Nagoya	JR Takayama Line 162min	Hida Furukawa	220min (3h40m)
		7min*			

(* This is waiting time between trains)

Hida Furukawa is not far from Takayama or Shirakawa-go. Include the Gem of Japan- Hida Furukawa when traveling to Takayama and Shirakawa-go.

Takayama	JR Takayama Line 16min	Hida Furukawa	16min
Takayama	Local Bus (Nohi Bus) Approx. 40 min	Hida Furukawa	40min
Takayama	Bus 67min	Shirakawa-go	67min

Nohi Bus TAKAYAMA ~ SHIRAKAWA-GO / KANAZAWA Line



Visit **Hida** 飛騨の旅 Visit Hida (The Official Tourism Website of Hida City) <http://www.hida-kankou.jp/kanko/foreign/en/>
Hida City Hall Tourism Division syokokanko@city.hida.gifu.jp

Please Note- Due to our office's IT security policy, we can not receive emails from free email sources like yahoo or google.



Discover the hidden gem of Central Japan!

Come to Hida Furukawa and Have a Truly Memorable Time With Us.

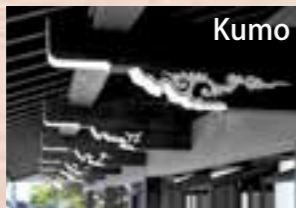
Furukawa Central District

Explore the Central Furukawa District

You will enjoy traditional architecture of a passionate cultural town. If you look closely at the eaves you will see intricate Kumo (clouds) carved into some. These are the unique personal signatures of each craftsman.



Kumo(Clouds) can be found throughout the Hida area. These are intricate white cloud designs found on the black eaves of the houses. Each craftsman has their own design, unique to them. How many different ones can you find?



Seto-gawa canal

Stroll down the Seto-gawa canal

This famous icon of Hida Furukawa will transport you to nostalgic Japan. The tranquil sound of the water, the beautiful warehouses and over **1000 KOI** will take you to the true essences of Japan. The koi are only here from early April to November.

Hida Satoyama Cycling

See why Hida is the Gem of Japan by touring the beautiful countryside by bicycle. Tours are fully guided in English by local experts.

SATOYAMA EXPERIENCE <http://satoyama-experience.com/>



Rail mountain bike "Gattan Go!!"

Feel the mountain air blowing through your hair. Hida locals have created this unique attraction. You can ride a mountain bike on the former railway tracks.

Rail mountain bike Gattan Go!! <http://rail-mtb.com/en/>

Nohi Bus Gattan Go!! Tour (Half day Tours) http://nouhibus.com/gattan_go_en.html

Museum



Hida Furukawa Festival Exhibition Hall

(Hida Furukawa Matsuri Kaikan)

Get up close and examine 3 of the 9 ornately decorated Yatai floats. Try your hand at the ancient craft of Karakuri (marionettes). You can experience the highlight of the festival through our 3D movie of the Furukawa Matsuri.

Hours: 9am -5pm (-4:30pm Dec. to Mar.)
Closed Dec. 28th to Jan. 2nd

Hida Crafts Museum (Hidano Takumi Bunkakan)

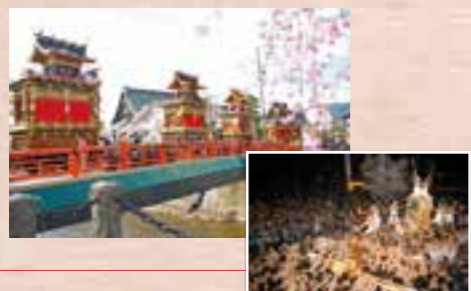
Come examine the amazing skill of the Japanese Traditional Joinery. The joins here are functional and masterful works of art, all with no nails. This museum is hands-on place, which the whole family can enjoy. See for yourself how these traditional techniques can protect a house from an earthquake.

Hours: 9am -5pm (-4:30pm Dec. to Feb.)
Closed on Thursdays and from Dec. 28th to Jan. 2nd
Note: A free audio guide in English is available.

Furukawa Festival

(Furukawa Matsuri) Apr. 19th-20th

Enjoy the city's transformation to a time honored parade of ornate Yatai floats, elaborate puppets, costumes and music. At night watch and feel the release of energy of the Okoshi-Daiko parade. Experience human ascent. This festival has been designated as a Cultural Heritage.



The Fox Wedding Festival

(Kitsune-bi Matsuri) 4th Sat. of Sept.

Come get into character with the town of Hida as they recreate the folktale of a fox's wedding. This festival is fun for the whole family.



A Visit to 3 Temples Event

(Santera Mairi) Jan. 15th

Santera Mairi is an event to receive good luck in marriage and love. Enjoy this festive event by renting a Kimono and catching the Hida Furukawa welcoming spirit and romance through the glow of the Japanese Traditional candles and the Snow Candle.



Locally Produced



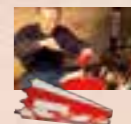
Hida-beef is the best kept secret of Japan. Enjoy tasting this delicate, elegant flavor premium beef which can only come from the best care, pastures and water Japan has to offer. After tasting it, you will want to keep this secret too!



Soba noodles, which is made from buckwheat, requires pristine mountain water and growing conditions. Hida Furukawa is the ideal location for the production of buckwheat. Enjoy with locals the delicious favor of Soba noodles hot or cold.



Sake breweries need the best rice, water, and an exact attention to detail. Only in Hida, will you find all 3. Enjoy our 3 historic sake breweries in Hida City. Once you taste these Sakes, you'll understand Hida's unique providence and why Hida is such a Gem.



Candle or Warousoku, a traditional Japanese handmade candle, is made in Mishima Candle Shop. They are made from HAZE, Japanese lacquer tree seed wax. They are virtually smokeless and burn brighter than normal candles.